

# DECO JOURNAL

Vol. 324

DESIGNER EUSA Architects / AREU, 최경민 FOCUS 2022 건축 Visionary Architecture / 김진우

KOREA 2022 건축 최경민 / AREU, 최경민 JUNG GALLERY / 박민준, 김민우 / 7, 2000000, 박민준, 김민우

INTERNATIONAL THIS IS PWSAR POOL / PETERHOFF, ALBERTOX HOTEL / MUSEUM OF ETHIC / ANTHONY BLISSON  
ANTOINE DE RUFFISCHON / GROUP / ARISTOTELI MUSEUM

CHINA SANYA SJIOR SEASIDE / ROBERT / WWW.WWW.BEIJINGWANG.COM

2022. 7



9 772693 094209

ISSN 2093-0941

15,000원



우수콘텐츠잡지  
2017



우수콘텐츠잡지  
2018



우수콘텐츠잡지  
2020



우수콘텐츠잡지  
2021



우수콘텐츠잡지  
2022





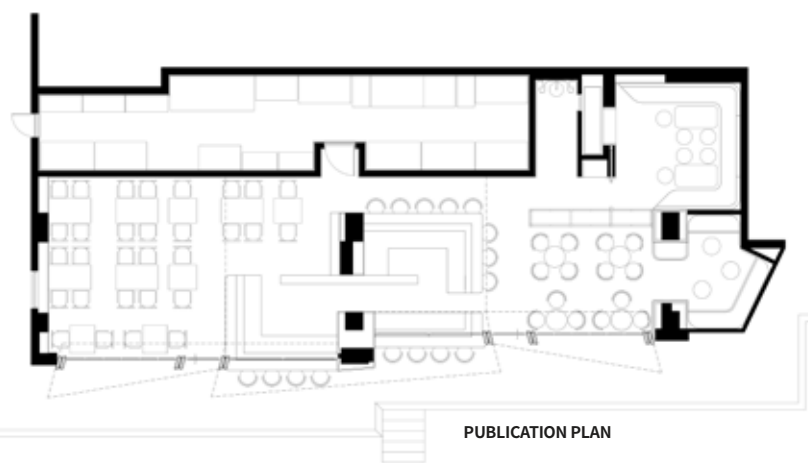


# SIETE 7

DESIGN BY O&O STUDIO







**PROJECT NAME :** Siete7  
**DESIGN STUDIO :** O&O Studio  
**DESIGNERS :** Katt Chung Yap, Eric Chan, Suzanne Li  
**DESIGN YEAR & COMPLETION YEAR :** Sep2021 – Mar2022  
**LEADER DESIGNER & TEAM :** O&O Studio  
**PROJECT LOCATION :** Yuecheng District, Shaoxing, PRC  
**GROSS BUILT AREA (SQUARE METERS) :** 160sq.m.  
**MATERIALS :** Stainless Steel, Handmade tiles, Wavy stainless steel  
**PHOTOGRAPHER :** Liu Nian, Katt Chung Yap

**H**ong Kong based architecture and interior design practice O&O Studio has completed the design of Siete7, a newly opened seafood restaurant and bar in Yuecheng District of Shaoxing. Located on the ground level of a raised terraced style pairing units, the scheme seeks for a resolution on a co-existing F&B space that inaugurate a spatial dialogue between them.





O &O Studio draws inspirations on 'concurrency' and 'synchronicity'. The central bar is conceived as a principal element, with the formal dining and casual drinking spaces sitting on either side, where these lead to a transitional space with the three key functions co-exist with each other while creating dialogues among them.





The flowing stainless steel ceiling subtly shimmers above the central bar, envisioning a clear yet gentle spatial statement as the transitional element. The vertical faces of the bar table, with an earthy pink stone texture carries a copper stainless steel bar top, form a solid and grounded element while hinting a scent of feminine essence. The simple legible wine rack provides a directional backdrop for the central element.

